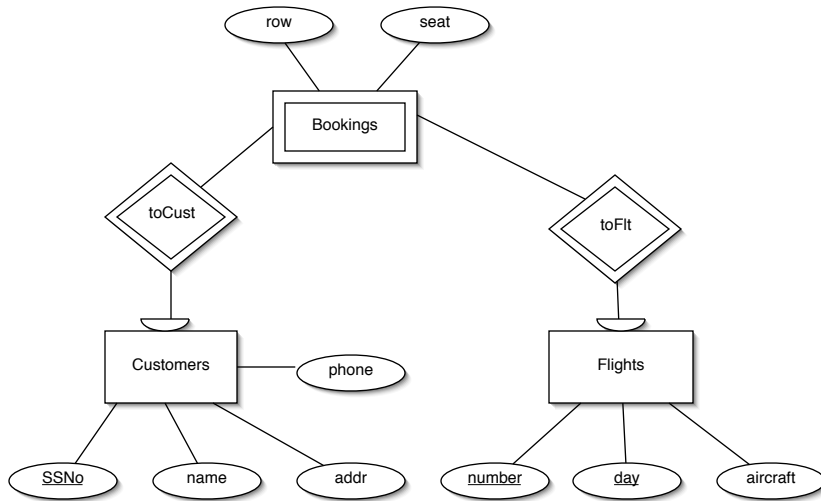


3.2.1 For Reference



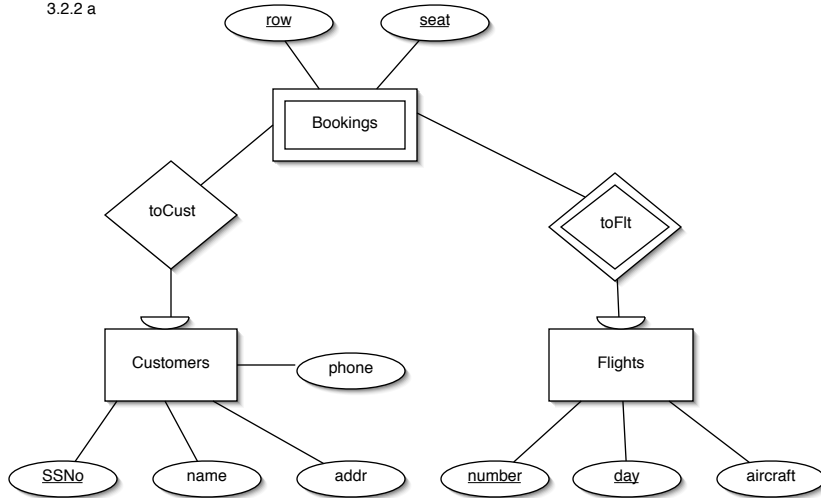
3.2.1 Relational Schema

Bookings(SSNo, number, day, row, seat)
 Customers(SSNo, name, addr, phone)
 Flights(number, day, aircraft)

Redundant, Eliminate, as both covered by Bookings
 toCust(SSNo1, SSNo2, number, day)
 key for Customers key for Bookings
 but SSNo1 will always have the same value
 as SSNo2.

toFit(number1, day1, SSNo, number2, day2)
 key for Flights key for Bookings
 but number1 will always have the same value
 as number2, and day1 will always have the same
 value as day2.

3.2.2 a



3.2.2 b Relational Schema

Bookings(row, seat, number, day)
 Customers(SSNo, name, addr, phone)
 Flights(number, day, aircraft)

toCust(SSNo, row, seat, number, day)
 key for Customers key for Bookings

toFit(number, day, row, seat, number, day2)
 key for Flights key for Bookings

Above, day and day2 would always be equal in their values,
 so toFit contains the same information as Bookings, and is
 therefore redundant.

Comparison:

The two relational schemas are **not** the same.

Bookings has an extra attribute in 3.2.2a.

toCust cannot be eliminated in 3.2.2a, as it
 can in 3.2.1.