

Copyright © 2019 Steinberg Architects. All Rights Reserved. These Plans and Specifications are intended for the sole benefit of Steinberg Architects' client and may not be used, copied, or reproduced in any form without the express written consent of Steinberg Architects.



No Card Reader, this is a keyed door.

SPECIFIC NOTES

① = OUT TO EXISTING POE SWITCH
 ② = OUT TO EXISTING NETWORK VIDEO RECORDER.

DESCRIPTION OF SYMBOL:
 SHEET NOTE NUMBER — X —> DETAIL NUMBER
 — SE-X —> SHEET NUMBER

CABLE LEGEND

# OF CONDUCTOR	TYPE	SIZE	USE	RATING	
E	FOUR PAIRS	UNSHIELDED	CAT6A	CAMERAS AND CARD READERS	PLENUM

NOTE: ALL WIRE TO BE RUN IN 3/4" CONDUIT (FURNISHED AND INSTALLED BY OTHERS) UNLESS OTHERWISE NOTED.

TRL Systems
 When Reliability Counts

Rancho Cucamonga - Corporate Headquarters:
 9531 Milliken Avenue, Rancho Cucamonga, CA 91730

Burbank - Regional Office:
 695 South Glenwood Place, Burbank, CA 91506

Tustin - Regional Office:
 1451 Edinger Avenue, Suite #A, Tustin, CA 92780

San Diego - Regional Office:
 9155 Brown Deer Road, Suite #7, San Diego, CA 92121

Tel: 800.266.1392 www.trlsystems.com
 909.390.8392 Email: info@trlsystems.com
 Fax: 909.390.8397 Lic. # C10/C16 - 413747

We support and encourage
 NECA certification

FILE #38741

HARVEY MUDD COLLEGE

steinberg hart

CLIENT
 Harvey Mudd College
 301 Platt Boulevard
 Claremont, CA 91711

CONSTRUCTION MANAGER
 DRR Construction
 88 W. Colorado Blvd, Suite 301
 Pasadena, CA 91105

ARCHITECT
 Steinberg Hart
 523 W. 6th St, Suite 245
 Los Angeles, CA 90014

CIVIL
 Kinley-Horn
 765 The City Drive, Suite 200
 Orange, CA 92668

LANDSCAPE
 LandLab
 2620 Curtis Ave., Unit B
 Redondo Beach, CA 90278

STRUCTURAL
 Brandow & Johnston
 700 S. Flower Street, Suite 1800
 Los Angeles, CA 90017

ACOUSTICS
 Veneklasen Associates
 1711 16th Street
 Santa Monica, CA 90404

MECHANICAL / PLUMBING DESIGN-BUILDER
 ACCO Engineered Systems
 265 McCormick Ave.
 Costa Mesa, California 92626

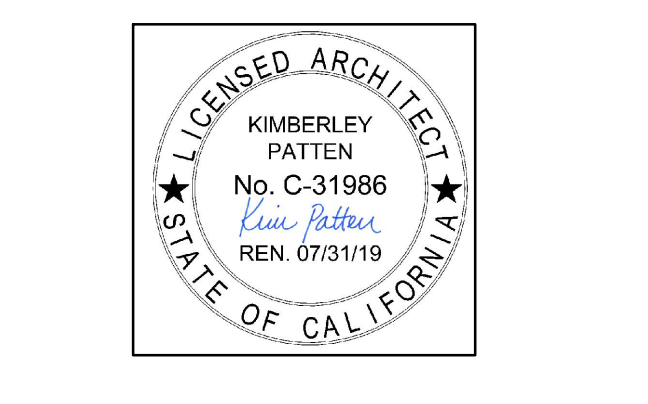
ELECTRICAL/TELECOM DESIGN-BUILDER
 CSI Electrical Contractors
 10623 Fulton Wells
 Santa Fe Springs, CA 90670

FIRE PROTECTION DESIGN-BUILDER
 Southwest Fire Protection Co.
 215 E. El Sur Street
 Monrovia, CA 91016

GEOTECHNICAL ENGINEER
 Tanning Consulting
 18011 Sky Park Circle, Suite J
 Irvine, CA 92614

**HARVEY MUDD COLLEGE
 MCGREGOR C.S. CENTER**
 201 PLATT BOULEVARD
 CLAREMONT, CA 91711

06.14.2019 PLAN/CHECK SUBMITTAL #2
 04.12.2019 PLAN/CHECK SUBMITTAL #1
 REV DATE ISSUE



PROJECT #: 15253.200
 DATE: 06/14/2019
 DRAWN BY: TRL Systems Inc.
 CHECKED BY: NR
 SCALE:

FIRST FLOOR PLAN

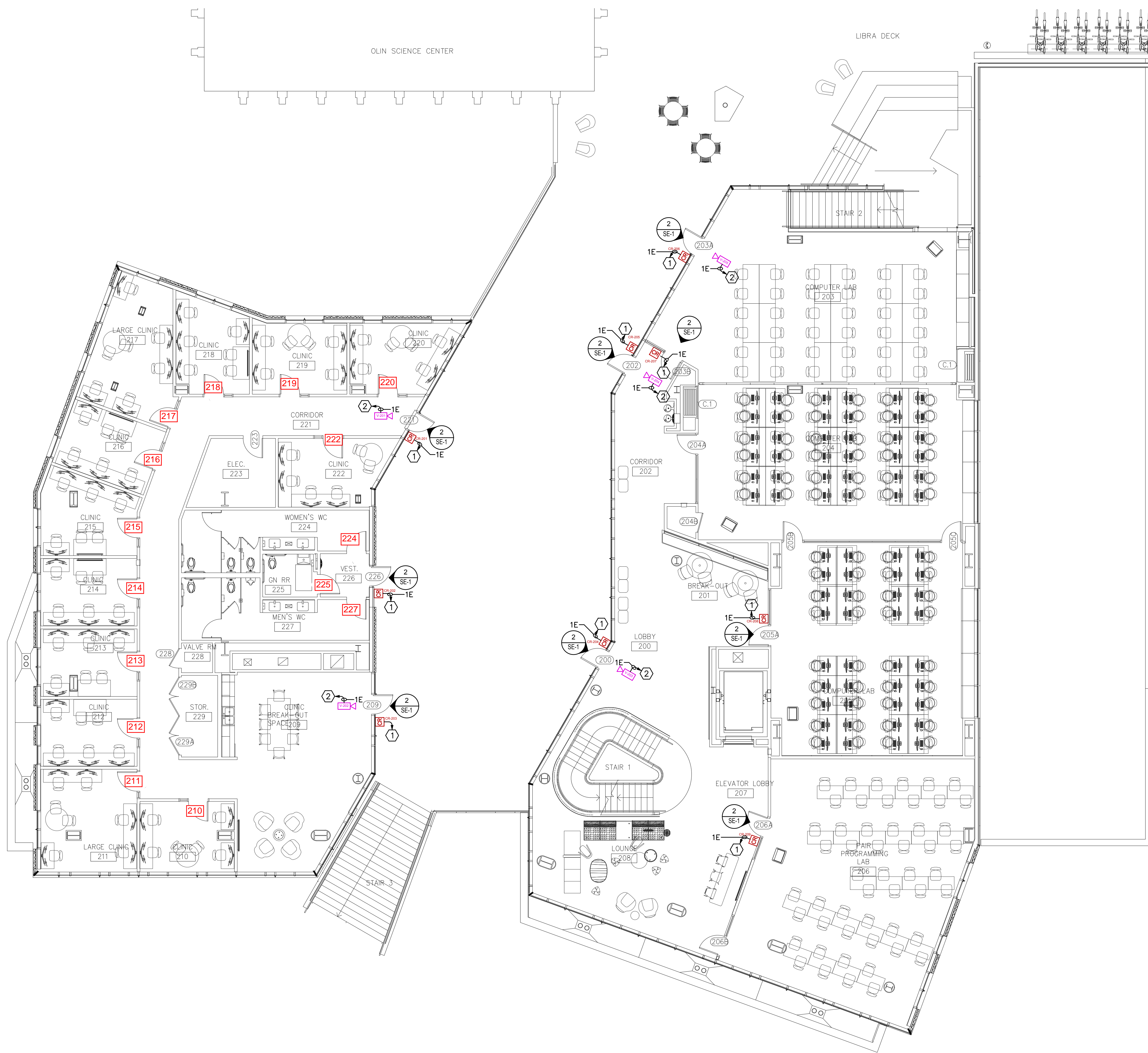
SE-2
 100% D.D.

NORTH

1/8"=1'-0"

FIRST FLOOR PLAN

Copyright 2019 Steinberg Architects. All Rights Reserved. These Plans and Specifications are intended for the sole benefit of Steinberg Architects' client and may not be used, copied, or reproduced in any form without the express written consent of Steinberg Architects.



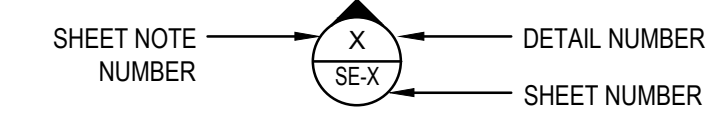
SECOND FLOOR PLAN

1/8"=1'-0"

SPECIFIC NOTES

- ① = OUT TO EXISTING POE SWITCH
- ② = OUT TO EXISTING NETWORK VIDEO RECORDER.

DESCRIPTION OF SYMBOL:



CABLE LEGEND

# OF CONDUCTOR	TYPE	SIZE	USE	RATING	
E	FOUR PAIRS	UNSHIELDED	CAT6A	CAMERAS AND CARD READERS	PLENUM

NOTE: ALL WIRE TO BE RUN IN 3/4" CONDUIT (FURNISHED AND INSTALLED BY OTHERS) UNLESS OTHERWISE NOTED.

TRL Systems
When Reliability Counts

Rancho Cucamonga - Corporate Headquarters:
9531 Milliken Avenue, Rancho Cucamonga, CA 91730

Burbank - Regional Office:
695 South Glenwood Place, Burbank, CA 91506

Tustin - Regional Office:
1451 Edinger Avenue, Suite #A, Tustin, CA 92780

San Diego - Regional Office:
9155 Brown Deer Road, Suite #7, San Diego, CA 92121

Tel: 800.266.1392 www.trlsystems.com
 909.390.8392 Email: info@trlsystems.com
 Fax: 909.390.8397 Lic. # C10/C16 - 413747

We support and encourage NECET certification FILE #336741

HARVEY MUDD COLLEGE

steinberg hart

CLIENT
Harvey Mudd College
301 Platt Boulevard
Claremont, CA 91711

CONSTRUCTION MANAGER
DRR Construction
88 W. Colorado Blvd, Suite 301
Pasadena, CA 91105

ARCHITECT
Steinberg Hart
523 W. 6th St, Suite 245
Los Angeles, CA 90014

CIVIL
Kinley-Horn
765 The City Drive, Suite 200
Orange, CA 92668

LANDSCAPE
LandLab
2620 Curtis Ave., Unit B
Redondo Beach, CA 90278

STRUCTURAL
Brandow & Johnston
700 S. Flower Street, Suite 1800
Los Angeles, CA 90017

ACOUSTICS
Veneklasen Associates
1711 16th Street
Santa Monica, CA 90404

MECHANICAL / PLUMBING DESIGN-BUILDER
ACCO Engineered Systems
265 McCormick Ave
Costa Mesa, California 92626

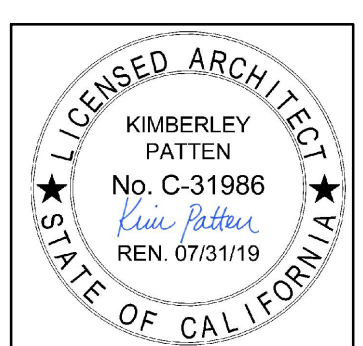
ELECTRICAL/TELECOM DESIGN-BUILDER
CSI Electrical Contractors
10623 Fulton Wells
Santa Fe Springs, CA 90670

FIRE PROTECTION DESIGN-BUILDER
Southwest Fire Protection Co.
215 E. El Sur Street
Monrovia, CA 91016

GEOTECHNICAL ENGINEER
Twinning Consulting
18011 Sky Park Circle, Suite J
Irvine, CA 92614

**HARVEY MUDD COLLEGE
MCGREGOR C.S. CENTER**
201 PLATT BOULEVARD
CLAREMONT, CA 91711

06.14.2019 PLAN/CHECK SUBMITTAL #2
04.12.2019 PLAN/CHECK SUBMITTAL #1
REV DATE ISSUE

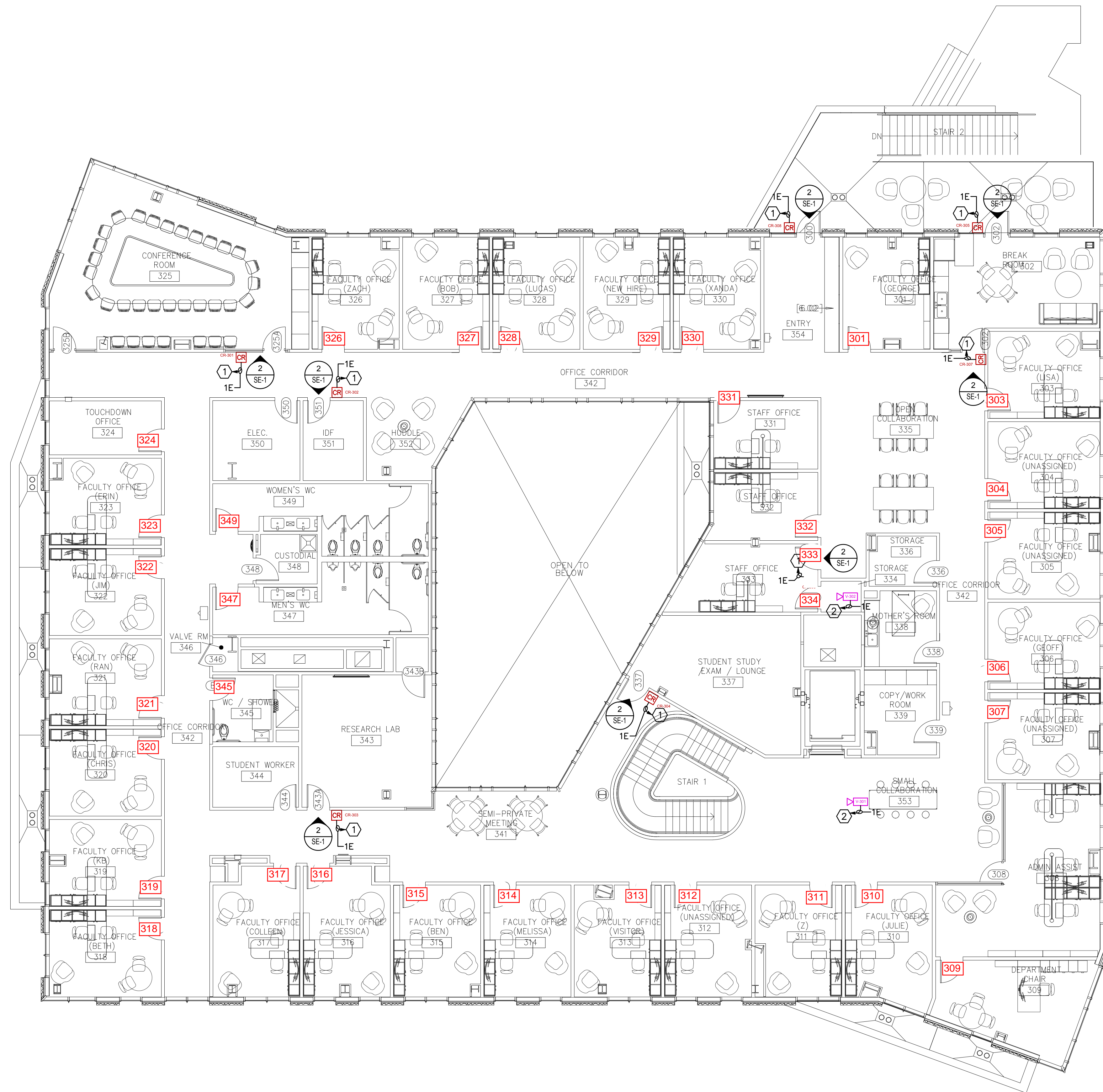


PROJECT #: 15253.200
DATE: 06/14/2019
DRAWN BY: TRL Systems Inc.
CHECKED BY: NR
SCALE:

SECOND FLOOR PLAN

SE-3
100% D.D.

Copyright 2019 Steinberg Architects. All Rights Reserved. These Plans and Specifications are intended for the sole benefit of Steinberg Architects' client and may not be used, copied, or reproduced in any form without the express written consent of Steinberg Architects.



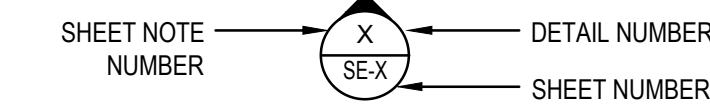
THIRD FLOOR PLAN

1/8"=1'-0"

SPECIFIC NOTES

- ① = OUT TO EXISTING POE SWITCH
- ② = OUT TO EXISTING NETWORK VIDEO RECORDER.

DESCRIPTION OF SYMBOL:



CABLE LEGEND

# OF CONDUCTOR	TYPE	SIZE	USE	RATING	
E	FOUR PAIRS	UNSHIELDED	CAT6A	CAMERAS AND CARD READERS	PLENUM

NOTE: ALL WIRE TO BE RUN IN 3/4" CONDUIT (FURNISHED AND INSTALLED BY OTHERS) UNLESS OTHERWISE NOTED.

TRL Systems
When Reliability Counts

Rancho Cucamonga - Corporate Headquarters:
9531 Milliken Avenue, Rancho Cucamonga, CA 91730

Burbank - Regional Office:
695 South Glenwood Place, Burbank, CA 91506

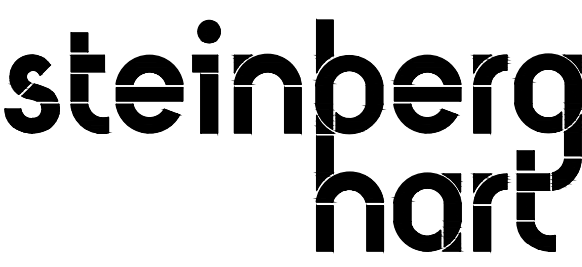
Tustin - Regional Office:
1451 Edinger Avenue, Suite #A, Tustin, CA 92780

San Diego - Regional Office:
9155 Brown Deer Road, Suite #7, San Diego, CA 92121

Tel: 800.266.1392 www.trlsystems.com
 909.390.8392 Email: info@trlsystems.com
 Fax: 909.390.8397 Lic. # C10/C16 - 413747

 We support and encourage NCEC certification

 FILE #336741



CLIENT
Harvey Mudd College
301 Platt Boulevard
Claremont, CA 91711

CONSTRUCTION MANAGER
DRR Construction
88 W. Colorado Blvd, Suite 301
Pasadena, CA 91105

ARCHITECT
Steinberg Hart
523 W. 6th St, Suite 245
Los Angeles, CA 90014

CIVIL
Kimley-Horn
765 The City Drive, Suite 200
Orange, CA 92668

LANDSCAPE
LandLab
2620 Curtis Ave., Unit B
Redondo Beach, CA 90278

STRUCTURAL
Brandow & Johnston
700 S. Flower Street, Suite 1800
Los Angeles, CA 90017

ACOUSTICS
Veneklasen Associates
1711 16th Street
Santa Monica, CA 90404

MECHANICAL / PLUMBING DESIGN-BUILDER
ACCO Engineered Systems
265 McCormick Ave
Costa Mesa, California 92626

ELECTRICAL/TELECOM DESIGN-BUILDER
CSI Electrical Contractors
10623 Fulton Wells
Santa Fe Springs, CA 90670

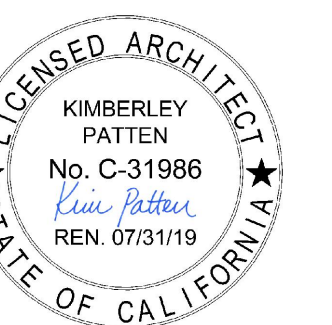
FIRE PROTECTION DESIGN-BUILDER
Southwest Fire Protection Co.
215 E. El Sur Street
Monrovia, CA 91016

GEOTECHNICAL ENGINEER
Twinning Consulting
18011 Sky Park Circle, Suite J
Irvine, CA 92614

**HARVEY MUDD COLLEGE
MCGREGOR C.S. CENTER**
201 PLATT BOULEVARD
CLAREMONT, CA 91711

06/14/2019 PLAN/CHECK SUBMITTAL #2
04/12/2019 PLAN/CHECK SUBMITTAL #1

REV DATE ISSUE



PROJECT #: 15253.200
DATE: 06/14/2019
DRAWN BY: TRL Systems Inc.
CHECKED BY: NR
SCALE:

THIRD FLOOR PLAN

SE-4
100% D.D.